



National Certificate in Infrastructure Works (Level 2) with optional strands in Earthworks, Pavement Surfacing, Roads, Rural Contracting, and Utilities

Level 2

Credits 54

Purpose

This qualification is for people commencing a career in the infrastructure works industry. They may be new to the industry, from school or another industry, or they may be already working in the industry without a qualification. This qualification is also relevant to pre-apprenticeship and work experience programmes in infrastructure works.

People who achieve the qualification will have basic knowledge and skills to work under supervision in one or more sectors in infrastructure works.

The compulsory section gives the trainee an understanding of the infrastructure works industries and the health, safety and environment knowledge required to work safely on site and with others. The elective section offers a broad choice of technical and generic knowledge and skills relevant to a wide variety of infrastructure works sites.

Trainees requiring further knowledge and skills in a specific sector of the infrastructure works industries can select one of the optional strands. The optional strands recognise basic knowledge and skills in specific sectors of the infrastructure industries such as earthworks, pavement surfacing, roads, rural contracting and utilities.

This qualification leads to a range of higher level technical qualifications in infrastructure works for bulk earthmoving, civil construction, civil plant operation, forestry, road construction and maintenance, horizontal directional drilling, infrastructure pipelaying, pavement surfacing, roadmarking, and water reticulation.

Replacement Information

This qualification replaced the National Certificate in Rural Contracting (Introductory Skills) [Ref: 0228], the National Certificate in Pavement Surfacing (Application) (Level 2) with strands in Asphalt, and Chipseal [Ref: 0465], and the National Certificate in Civil Infrastructure (General Introductory Skills) [Ref: 1125].

Special Notes

It is recommended that candidates for the Earthworks Optional Strand who do not work in a forestry environment select Unit 17328, *Demonstrate fundamental knowledge of earthworks*.

Candidates who achieve credit for standards 21563 and 21564 may be eligible for Approved Handler test certification. Approved Handler test certificates are issued only by Test Certifiers appointed under the Hazardous Substances and New Organisms Act 1996 (HSNO). For further information, contact the Environmental Risk Management Authority (ERMA), telephone 0800 376 269, or go to <http://www.ermanz.govt.nz>.

Some elective standards are included in optional strands of this qualification. Candidates are advised to select standards to meet credit requirements for the elective section that do not restrict their achievement of any of the strands.

Credit Range

| | Core Compulsory | Core Elective | |
|--------------------------|-----------------|-------------------|-----------------------|
| | | Core Elective Set | Core Elective Balance |
| Level 1 credits | - | 0-10 | 0-10 |
| Level 2 credits | 4 | 0-50 | 0-20 |
| Level 3 or above credits | - | 0-16 | 0-16 |
| Minimum totals | 4 | 30-50 | 0-20 |
| Total | 4 | 50 | |

| | Earthworks Optional Strand | Pavement Surfacing Optional Strand | Roads Optional Strand |
|--------------------------|----------------------------|------------------------------------|-----------------------|
| Level 2 credits | 0-12 | 15-25 | 0-12 |
| Level 3 or above credits | - | 0-10 | 0-12 |
| Minimum totals | 12 | 25 | 12 |
| Totals with strand | 66 | 79 | 66 |

| | Rural Contracting Optional Strand | Utilities Optional Strand |
|--------------------------|-----------------------------------|---------------------------|
| Level 2 credits | 0-12 | 1-12 |
| Level 3 or above credits | 0-12 | 0-11 |
| Minimum totals | 12 | 12 |
| Totals with strand | 66 | 66 |

Requirements for Award of Qualification

Award of NZQF National Qualifications

Credit gained for a standard may be used only once to meet the requirements of this qualification.

Unit standards and achievement standards that are equivalent in outcome are mutually exclusive for the purpose of award. The table of mutually exclusive standards is provided on the New Zealand Qualifications Authority (NZQA) website: <http://www.nzqa.govt.nz/qualifications-standards/standards/standards-exclusion-list/>.

Reviewed standards that continue to recognise the same overall outcome are registered as new versions and retain their identification number (ID). Any version of a standard with the same ID may be used to meet qualification requirements that list the ID and/or that specify the past or current classification of the standard.

Summary of Requirements

- Core Compulsory standards
- Core Elective – A minimum of 50 credits as specified

The following strands are optional

- Earthworks Optional Strand
- Pavement Surfacing Optional Strand
- Roads Optional Strand
- Rural Contracting Optional Strand
- Utilities Optional Strand

Detailed Requirements

Core Compulsory

The following standards are required

Engineering and Technology > Infrastructure Works > Generic Infrastructure Works

| ID | Title | Level | Credit |
|-------|---|-------|--------|
| 22283 | Demonstrate knowledge of occupational areas and structures in the New Zealand infrastructure works industry | 2 | 2 |

Engineering and Technology > Infrastructure Works > Infrastructure Works Health, Safety, and Environment

| ID | Title | Level | Credit |
|-------|---|-------|--------|
| 26720 | Describe health, safety, and environmental care at an infrastructure works site | 2 | 2 |

Core Elective

A minimum of 50 credits

- Of which a minimum of 40 credits at Level 2 or above

From the following sets

- Core Elective Set
- Core Elective Balance

Core Elective Set

A minimum of 30 credits

Agriculture, Forestry and Fisheries > Agriculture > Agricultural Vehicles and Machinery

| ID | Title | Level | Credit |
|-------|--|-------|--------|
| 19044 | Describe the legal requirements and occupational hazards associated with tractor use | 2 | 2 |
| 24552 | Check and drive a basic wheel tractor with an attached implement on flat terrain | 2 | 5 |

Agriculture, Forestry and Fisheries > Pest Management > Pest Control

| ID | Title | Level | Credit |
|-------|---|-------|--------|
| 21560 | Demonstrate knowledge of agrichemicals | 3 | 6 |
| 21563 | Demonstrate knowledge of the HSNO Act, and NZS 8409:2004 for the use of agrichemicals | 3 | 5 |
| 21564 | Prepare to apply, and apply, agrichemicals | 3 | 5 |

Agriculture, Forestry and Fisheries > Rural Contracting > Agricultural Contracting

| ID | Title | Level | Credit |
|------|--|-------|--------|
| 6255 | Drive a wheel tractor towing a heavy load | 3 | 3 |
| 6257 | Operate a mounted front end loader unit for agricultural contracting | 3 | 5 |

Engineering and Technology > Civil Plant Operation and Management > Civil Plant Operation

| ID | Title | Level | Credit |
|-------|---|-------|--------|
| 6465 | Operate a power-driven rotary broom | 3 | 6 |
| 6467 | Operate a plate compactor on civil construction materials | 2 | 4 |
| 19675 | Operate a road saw | 2 | 4 |

Engineering and Technology > Civil Works and Services > Civil Construction Works

| ID | Title | Level | Credit |
|-------|--|-------|--------|
| 6476 | Read and interpret civil construction plans | 2 | 2 |
| 6478 | Maintain and disestablish temporary civil works sites | 2 | 3 |
| 6480 | Assist with survey and set-out on civil construction works | 1 | 3 |
| 6484 | Install gabion baskets for civil construction works | 3 | 8 |
| 17328 | Demonstrate fundamental knowledge of earthworks | 2 | 5 |

Engineering and Technology > Civil Works and Services > Civil Infrastructure Health, Safety, and Environment

| ID | Title | Level | Credit |
|-------|---|-------|--------|
| 20868 | Demonstrate knowledge of emergency response in the civil infrastructure industry | 3 | 4 |
| 20877 | Demonstrate knowledge of working safely at sites under temporary traffic management | 2 | 1 |

Engineering and Technology > Highway Construction and Maintenance > Temporary Traffic Management

| ID | Title | Level | Credit |
|-------|---|-------|--------|
| 20878 | Assist with temporary traffic management for low volume and Level 1 roads | 2 | 1 |

Engineering and Technology > Infrastructure Works > Generic Infrastructure Works

| ID | Title | Level | Credit |
|-------|---|-------|--------|
| 6452 | Maintain, transport, and store equipment used for temporary traffic management | 2 | 3 |
| 6472 | Carry out manual excavation for infrastructure works | 1 | 2 |
| 6475 | Describe and complete work records for infrastructure works | 2 | 2 |
| 6477 | Identify, hand spread, and assist in compacting materials for infrastructure works | 1 | 3 |
| 6479 | Locate and identify services for infrastructure works | 3 | 5 |
| 17327 | Apply communication skills on an infrastructure works site | 2 | 3 |
| 20875 | Demonstrate knowledge of slinging, lifting, moving, and placing loads with an excavator or loader | 2 | 5 |
| 26719 | Lay interlocking pavers for infrastructure works under supervision | 2 | 6 |

Engineering and Technology > Infrastructure Works > Generic Road Works

| ID | Title | Level | Credit |
|------|--|-------|--------|
| 6485 | Install hand rail or sight rail for road | 2 | 4 |

Engineering and Technology > Infrastructure Works > Infrastructure Civil Works

| ID | Title | Level | Credit |
|-------|--|-------|--------|
| 20616 | Demonstrate knowledge of earthworks in relation to the environment | 2 | 4 |

Engineering and Technology > Infrastructure Works > Infrastructure Works Equipment

| ID | Title | Level | Credit |
|------|---|-------|--------|
| 6469 | Maintain small machinery used on an infrastructure works site | 1 | 2 |

| ID | Title | Level | Credit |
|-------|---|-------|--------|
| 6470 | Use a handheld pavement breaker | 2 | 4 |
| 23285 | Use and care for hand tools used for infrastructure works | 2 | 2 |
| 26717 | Use a generator on an infrastructure works site | 2 | 1 |
| 26718 | Use a compressor on an infrastructure works site | 2 | 1 |

Engineering and Technology > Infrastructure Works > Infrastructure Works Health, Safety, and Environment

| ID | Title | Level | Credit |
|-------|--|-------|--------|
| 20874 | Demonstrate knowledge of health and fitness for infrastructure works personnel | 3 | 7 |

Engineering and Technology > Water Industry > Water - Generic

| ID | Title | Level | Credit |
|-------|--|-------|--------|
| 19200 | Demonstrate knowledge of, and apply, mathematics in the water industry | 2 | 3 |

Engineering and Technology > Water Industry > Water Reticulation

| ID | Title | Level | Credit |
|-------|---|-------|--------|
| 24921 | Select, use, and maintain tools and equipment in water reticulation | 2 | 7 |

Health > Occupational Health and Safety > Occupational Health and Safety Practice

| ID | Title | Level | Credit |
|-------|---|-------|--------|
| 497 | Demonstrate knowledge of workplace health and safety requirements | 1 | 3 |
| 17593 | Apply safe work practices in the workplace | 2 | 4 |
| 17600 | Explain safe work practices for working at heights | 3 | 3 |
| 17602 | Apply hazard identification and risk assessment procedures in the workplace | 3 | 4 |
| 18426 | Demonstrate knowledge of hazards associated with confined space | 3 | 4 |
| 19522 | Undertake job safety analysis | 2 | 4 |
| 25043 | Lockout and reinstate machinery in the workplace | 2 | 4 |
| 25045 | Employ height safety equipment in the workplace | 3 | 4 |
| 25046 | Describe hazard identification and control, and apply risk assessment procedures under supervision in the workplace | 2 | 2 |
| 25048 | Handle dangerous and hazardous goods in the workplace | 2 | 3 |

Planning and Construction > Concrete > Concrete Core Skills

| ID | Title | Level | Credit |
|-------|--|-------|--------|
| 26051 | Demonstrate knowledge, and carry out curing, of concrete | 2 | 8 |

Planning and Construction > Construction Trades > Building, Construction, and Allied Trades Skills

| ID | Title | Level | Credit |
|-------|--|-------|--------|
| 12933 | Complete minor concrete works as a BCATS project | 2 | 4 |

Service Sector > Driving > Driver Licence Endorsements

| ID | Title | Level | Credit |
|-------|--|-------|--------|
| 16701 | Demonstrate knowledge and skills for driving on a road for endorsement W (wheels) | 3 | 3 |
| 16702 | Demonstrate knowledge and skills for driving on a road for endorsement R (rollers) | 3 | 3 |
| 16703 | Demonstrate knowledge and skills for driving on a road for endorsement T (tracks) | 3 | 3 |

| Field | Subfield | Domain |
|----------------------------|----------------------|---|
| Engineering and Technology | Infrastructure Works | Infrastructure Works Health, Safety, and Environment |

Core Elective Balance

The balance of credits to achieve

A minimum of 50 credits

- Of which a minimum of 40 credits at Level 2 or above

May come from the following

Agriculture, Forestry and Fisheries > Forestry > Forest Foundation Skills

| ID | Title | Level | Credit |
|-------|---|-------|--------|
| 17769 | Demonstrate knowledge of general health, safety, and environmental requirements in forestry | 2 | 6 |

Agriculture, Forestry and Fisheries > Pest Management > Pest Control

| ID | Title | Level | Credit |
|-------|--|-------|--------|
| 21554 | Demonstrate knowledge of safety with agrichemicals | 2 | 3 |
| 21556 | Control weeds under supervision | 2 | 2 |

Agriculture, Forestry and Fisheries > Rural Contracting > Agricultural Contracting

| ID | Title | Level | Credit |
|-------|--|-------|--------|
| 19577 | Perform measurements and calculations for agricultural contracting | 2 | 2 |
| 19578 | Describe and maintain health and safety in an agricultural contracting workplace | 2 | 4 |

Core Generic > Core Generic > Self-Management

| ID | Title | Level | Credit |
|-------|--|-------|--------|
| 496 | Manage personal wellness | 1 | 3 |
| 548 | Demonstrate knowledge of management of alcohol and other drugs | 1 | 2 |
| 4258 | Describe ways of managing and coping with change | 2 | 2 |
| 7123 | Apply a problem solving method to a problem | 2 | 2 |
| 12348 | Demonstrate knowledge of anger and options for dealing with anger issues | 1 | 2 |
| 12349 | Demonstrate knowledge of time management | 2 | 3 |
| 12355 | Describe stress and ways of dealing with it | 2 | 2 |

Core Generic > Core Generic > Work and Study Skills

| ID | Title | Level | Credit |
|------|---|-------|--------|
| 1978 | Identify and describe basic employment rights and responsibilities, and sources of information and assistance | 1 | 3 |
| 4249 | Demonstrate care and timeliness as an employee | 1 | 4 |
| 7117 | Produce a plan to enhance own learning | 2 | 2 |
| 7118 | Manage own learning programme | 2 | 3 |

Engineering and Technology > Civil Works and Services > Civil Construction Works

| ID | Title | Level | Credit |
|-------|---|-------|--------|
| 20477 | Demonstrate knowledge of soil properties for earthworks | 2 | 3 |
| 25831 | Describe and hand test road construction materials in relation to compaction | 2 | 3 |
| 25832 | Use a nuclear density meter to measure compaction of soils, sands, or gravels | 2 | 3 |

Engineering and Technology > Gas Industry > Gas Network Operations

| ID | Title | Level | Credit |
|-------|--|-------|--------|
| 11326 | Interpret symbols, signs, and terminology specific to a gas distribution network | 2 | 2 |

| ID | Title | Level | Credit |
|-------|--|-------|--------|
| 17690 | Identify potential hazards of and safety precautions for working with live reticulated gas | 2 | 6 |

Engineering and Technology > Highway Construction and Maintenance > Roothing Maintenance

| ID | Title | Level | Credit |
|-------|---|-------|--------|
| 11304 | Maintain road by repairing chipsealed surfaces | 2 | 3 |
| 11305 | Adjust the height of surface boxes for roading maintenance | 2 | 3 |
| 11306 | Restore pavement using stabilisation techniques | 2 | 5 |
| 11307 | Maintain road bridge surface and furniture | 2 | 5 |
| 11308 | Maintain road bridge waterways | 2 | 3 |
| 11309 | Maintain road by manually cleaning and repairing open drainage system | 3 | 7 |
| 11313 | Maintain footpath in road reserve | 3 | 5 |
| 11315 | Maintain road reserve by removing detritus and litter | 2 | 3 |
| 11317 | Install and maintain roadside amenities | 2 | 3 |
| 11319 | Trim and remove vegetation for roading maintenance | 2 | 2 |
| 22287 | Maintain roading median strips, berms and traffic islands | 2 | 2 |

Engineering and Technology > Highway Construction and Maintenance > Roadmarking

| ID | Title | Level | Credit |
|-------|---|-------|--------|
| 21418 | Demonstrate basic knowledge of materials, plant, and process in roadmarking | 2 | 6 |
| 21419 | Perform basic roadmarking tasks | 2 | 6 |
| 21424 | Set out simple roadmarking work | 2 | 2 |

Engineering and Technology > Infrastructure Works > Generic Road Works

| ID | Title | Level | Credit |
|-------|--|-------|--------|
| 15930 | Locate work sites using route data system, maps, and plans | 2 | 3 |

Engineering and Technology > Infrastructure Works > Infrastructure Civil Works

| ID | Title | Level | Credit |
|-------|---|-------|--------|
| 20624 | Demonstrate knowledge of bulk earthmoving | 2 | 4 |

Engineering and Technology > Infrastructure Works > Infrastructure Works Utilities

| ID | Title | Level | Credit |
|-------|--|-------|--------|
| 20475 | Demonstrate knowledge of forestry earthworks | 2 | 4 |

Engineering and Technology > Pavement Surfacing > Asphalt Surfacing

| ID | Title | Level | Credit |
|-------|---|-------|--------|
| 13518 | Demonstrate sweeping, placing, compacting, and associated handwork skills for asphalt surfacing | 2 | 20 |
| 13521 | Demonstrate knowledge of the compaction of hot mix asphalt | 3 | 5 |

Engineering and Technology > Pavement Surfacing > Bitumen Surfacing

| ID | Title | Level | Credit |
|-------|--|-------|--------|
| 20455 | Demonstrate basic knowledge of safety relating to bituminous materials | 2 | 5 |
| 20456 | Demonstrate first aid relating to liquid bitumen and bitumen additives | 2 | 1 |

Engineering and Technology > Pavement Surfacing > Chipseal Surfacing

| ID | Title | Level | Credit |
|-------|---|-------|--------|
| 8021 | Demonstrate knowledge of chipseal construction plant | 3 | 5 |
| 13517 | Demonstrate sweeping, chip-spreading, and associated handwork skills for chipseal surfacing | 2 | 15 |

Engineering and Technology > Petrochemical Industry > Petrochemical Operations
Communication and Responses

| ID | Title | Level | Credit |
|------|--|-------|--------|
| 9631 | Use personal protection equipment in a petrochemical workplace | 2 | 2 |

Engineering and Technology > Water Industry > Water - Generic

| ID | Title | Level | Credit |
|-------|---|-------|--------|
| 19205 | Demonstrate knowledge of pathogens, diseases, and their control in the water industry | 3 | 2 |

Engineering and Technology > Water Industry > Water Reticulation

| ID | Title | Level | Credit |
|-------|---|-------|--------|
| 19201 | Demonstrate knowledge of reticulated services and their location, in the water industry | 3 | 4 |
| 19207 | Enter, work in, and exit a confined space in the water industry | 3 | 5 |
| 19213 | Demonstrate knowledge of blockage clearance and wastewater maintenance | 2 | 3 |

Humanities > Communication Skills > Interpersonal Communications

| ID | Title | Level | Credit |
|------|---|-------|--------|
| 3501 | Demonstrate knowledge of and apply listening techniques | 1 | 3 |
| 3503 | Participate and communicate in a team or group to complete a routine task | 1 | 2 |

Planning and Construction > Concrete > Concrete Core Skills

| ID | Title | Level | Credit |
|-------|---|-------|--------|
| 24879 | Demonstrate knowledge of concrete materials and the concrete production process | 2 | 8 |
| 26050 | Demonstrate knowledge of transporting fresh concrete, and transport fresh concrete in own workplace | 2 | 3 |

Service Sector > Driving > Core Driving Knowledge and Skills

| ID | Title | Level | Credit |
|-------|--|-------|--------|
| 3466 | Apply risk reduction techniques and strategies while driving | 3 | 4 |
| 3471 | Tow a light simple trailer | 2 | 1 |
| 17676 | Carry out a pre-drive vehicle check on a light motor vehicle, and start and shut down the vehicle. | 2 | 3 |

Earthworks Optional Strand

A minimum of 12 credits

Agriculture, Forestry and Fisheries > Forestry > Forest Foundation Skills

| ID | Title | Level | Credit |
|-------|---|-------|--------|
| 17769 | Demonstrate knowledge of general health, safety, and environmental requirements in forestry | 2 | 6 |

Engineering and Technology > Civil Works and Services > Civil Construction Works

| ID | Title | Level | Credit |
|-------|---|-------|--------|
| 17328 | Demonstrate fundamental knowledge of earthworks | 2 | 5 |
| 20477 | Demonstrate knowledge of soil properties for earthworks | 2 | 3 |

Engineering and Technology > Infrastructure Works > Infrastructure Civil Works

| ID | Title | Level | Credit |
|-------|--|-------|--------|
| 20616 | Demonstrate knowledge of earthworks in relation to the environment | 2 | 4 |
| 20624 | Demonstrate knowledge of bulk earthmoving | 2 | 4 |

Engineering and Technology > Infrastructure Works > Infrastructure Works Utilities

| ID | Title | Level | Credit |
|-------|--|-------|--------|
| 20475 | Demonstrate knowledge of forestry earthworks | 2 | 4 |

Pavement Surfacing Optional Strand

A minimum of 25 credits

Engineering and Technology > Pavement Surfacing > Asphalt Surfacing

| ID | Title | Level | Credit |
|-------|---|-------|--------|
| 13518 | Demonstrate sweeping, placing, compacting, and associated handwork skills for asphalt surfacing | 2 | 20 |
| 13521 | Demonstrate knowledge of the compaction of hot mix asphalt | 3 | 5 |

Engineering and Technology > Pavement Surfacing > Bitumen Surfacing

| ID | Title | Level | Credit |
|-------|--|-------|--------|
| 20455 | Demonstrate basic knowledge of safety relating to bituminous materials | 2 | 5 |
| 20456 | Demonstrate first aid relating to liquid bitumen and bitumen additives | 2 | 1 |

Engineering and Technology > Pavement Surfacing > Chipseal Surfacing

| ID | Title | Level | Credit |
|-------|---|-------|--------|
| 8021 | Demonstrate knowledge of chipseal construction plant | 3 | 5 |
| 13517 | Demonstrate sweeping, chip-spreading, and associated handwork skills for chipseal surfacing | 2 | 15 |

Roads Optional Strand

A minimum of 12 credits

Engineering and Technology > Civil Works and Services > Civil Construction Works

| ID | Title | Level | Credit |
|-------|---|-------|--------|
| 25831 | Describe and hand test road construction materials in relation to compaction | 2 | 3 |
| 25832 | Use a nuclear density meter to measure compaction of soils, sands, or gravels | 2 | 3 |

Engineering and Technology > Highway Construction and Maintenance > Roothing Maintenance

| ID | Title | Level | Credit |
|-------|--|-------|--------|
| 11304 | Maintain road by repairing chipsealed surfaces | 2 | 3 |
| 11305 | Adjust the height of surface boxes for roading maintenance | 2 | 3 |

| ID | Title | Level | Credit |
|-------|---|-------|--------|
| 11306 | Restore pavement using stabilisation techniques | 2 | 5 |
| 11307 | Maintain road bridge surface and furniture | 2 | 5 |
| 11308 | Maintain road bridge waterways | 2 | 3 |
| 11309 | Maintain road by manually cleaning and repairing open drainage system | 3 | 7 |
| 11313 | Maintain footpath in road reserve | 3 | 5 |
| 11315 | Maintain road reserve by removing detritus and litter | 2 | 3 |
| 11317 | Install and maintain roadside amenities | 2 | 3 |
| 11319 | Trim and remove vegetation for roading maintenance | 2 | 2 |
| 22287 | Maintain roading median strips, berms and traffic islands | 2 | 2 |

Engineering and Technology > Highway Construction and Maintenance > Roadmarking

| ID | Title | Level | Credit |
|-------|---|-------|--------|
| 21418 | Demonstrate basic knowledge of materials, plant, and process in roadmarking | 2 | 6 |
| 21419 | Perform basic roadmarking tasks | 2 | 6 |
| 21424 | Set out simple roadmarking work | 2 | 2 |

Engineering and Technology > Infrastructure Works > Generic Road Works

| ID | Title | Level | Credit |
|-------|--|-------|--------|
| 6485 | Install hand rail or sight rail for road | 2 | 4 |
| 15930 | Locate work sites using route data system, maps, and plans | 2 | 3 |

Rural Contracting Optional Strand

A minimum of 12 credits

Agriculture, Forestry and Fisheries > Agriculture > Agrichemical Supply

| ID | Title | Level | Credit |
|-------|--|-------|--------|
| 21544 | Demonstrate knowledge of the environmental aspects of agrichemical use | 3 | 6 |

Agriculture, Forestry and Fisheries > Agriculture > Agricultural Vehicles and Machinery

| ID | Title | Level | Credit |
|-------|--|-------|--------|
| 19044 | Describe the legal requirements and occupational hazards associated with tractor use | 2 | 2 |
| 24552 | Check and drive a basic wheel tractor with an attached implement on flat terrain | 2 | 5 |

Agriculture, Forestry and Fisheries > Pest Management > Pest Control

| ID | Title | Level | Credit |
|-------|---------------------------------|-------|--------|
| 21556 | Control weeds under supervision | 2 | 2 |

Agriculture, Forestry and Fisheries > Rural Contracting > Agricultural Contracting

| ID | Title | Level | Credit |
|-------|--|-------|--------|
| 6255 | Drive a wheel tractor towing a heavy load | 3 | 3 |
| 19577 | Perform measurements and calculations for agricultural contracting | 2 | 2 |
| 19578 | Describe and maintain health and safety in an agricultural contracting workplace | 2 | 4 |

Service Sector > Driving > Core Driving Knowledge and Skills

| ID | Title | Level | Credit |
|-------|--|-------|--------|
| 3466 | Apply risk reduction techniques and strategies while driving | 3 | 4 |
| 3471 | Tow a light simple trailer | 2 | 1 |
| 17676 | Carry out a pre-drive vehicle check on a light motor vehicle, and start and shut down the vehicle. | 2 | 3 |

Utilities Optional Strand

A minimum of 12 credits

Engineering and Technology > Civil Plant Operation and Management > Civil Plant Operation

| ID | Title | Level | Credit |
|-------|--------------------|-------|--------|
| 19675 | Operate a road saw | 2 | 4 |

Engineering and Technology > Gas Industry > Gas Network Operations

| ID | Title | Level | Credit |
|-------|--|-------|--------|
| 11326 | Interpret symbols, signs, and terminology specific to a gas distribution network | 2 | 2 |
| 17690 | Identify potential hazards of and safety precautions for working with live reticulated gas | 2 | 6 |

Engineering and Technology > Petrochemical Industry > Petrochemical Operations
Communication and Responses

| ID | Title | Level | Credit |
|------|--|-------|--------|
| 9631 | Use personal protection equipment in a petrochemical workplace | 2 | 2 |

Engineering and Technology > Water Industry > Water - Generic

| ID | Title | Level | Credit |
|-------|---|-------|--------|
| 19205 | Demonstrate knowledge of pathogens, diseases, and their control in the water industry | 3 | 2 |

Engineering and Technology > Water Industry > Water Reticulation

| ID | Title | Level | Credit |
|-------|---|-------|--------|
| 19201 | Demonstrate knowledge of reticulated services and their location, in the water industry | 3 | 4 |
| 19207 | Enter, work in, and exit a confined space in the water industry | 3 | 5 |
| 19213 | Demonstrate knowledge of blockage clearance and wastewater maintenance | 2 | 3 |

Planning and Construction > Concrete > Concrete Core Skills

| ID | Title | Level | Credit |
|-------|---|-------|--------|
| 24879 | Demonstrate knowledge of concrete materials and the concrete production process | 2 | 8 |
| 26050 | Demonstrate knowledge of transporting fresh concrete, and transport fresh concrete in own workplace | 2 | 3 |

Transition Arrangements

Version 1

Version 1 was republished in order to include reverse transition arrangements (see section below) to ensure candidates would not be disadvantaged when an expiring standard was no longer available.

This qualification replaced the National Certificate in Rural Contracting (Introductory Skills) [Ref: 0228], the National Certificate in Pavement Surfacing (Application) (Level 2) with strands in Asphalt, and Chipseal [Ref: 0465], and the National Certificate in Civil Infrastructure (General Introductory Skills) [Ref: 1125].

For detailed information see [Review Summaries](#) on the NZQA website.

People currently working towards achievement of the replaced qualifications may either complete the requirements for those qualifications or transfer their results to this qualification. However, there are substantial differences between the new and replaced qualifications, and it is recommended that candidates complete the qualification in which they are enrolled. Candidates who do wish to transfer to this qualification should choose the standards and strands that best fit their training requirements. For assistance please contact InfraTrain New Zealand Ltd at the contact details given below. Transferring, candidates will need to gain credit for the additional standards required.

It is recommended that those candidates transferring from the replaced qualifications choose the following optional strands contained in this qualification:

| Transferring from | Recommended Optional strand |
|--|-----------------------------|
| National Certificate in Rural Contracting (Introductory Skills) [Ref: 0228] | Rural Contracting |
| National Certificate in Pavement Surfacing (Application) (Level 2) with strands in Asphalt, and Chipseal [Ref: 0465] | Pavement Surfacing |

The last date for entry into training programmes or a course for the replaced qualification is 31 December 2011. The last date for assessment against the replaced qualifications is 31 December 2013.

This qualification contains standards that replace an earlier standard. For the purposes of this qualification, people who have gained credit for the expiring standards are exempt from the requirement to gain credit for the replacement standards – see table below.

| Credit for | Exempt from |
|------------|--------------|
| 6457 | 26717, 26718 |

Any person who feels disadvantaged by these transition arrangements should contact InfraTrain New Zealand at the address below.

Reverse transition

Reverse transition has been included for version 1 of this qualification to allow candidates to complete that version of the qualification using the expired standard or replacement standard.

Version 1 of this qualification contains a standard that has expired. For the purposes of version 1 of this qualification, people who have gained credit for the replacement standard are exempt from the requirement to gain credit for the expired standard – see table below.

| Credit for | Exempt from |
|------------|-------------|
| 27500 | 6467 |

NZQF National Qualification Registration Information

| Process | Version | Date | Last Date for Assessment |
|--------------|---------|--------------|--------------------------|
| Registration | 1 | May 2011 | N/A |
| Republished | 1 | October 2014 | N/A |

Standard Setting Body

Infrastructure ITO
PO Box 2759
Wellington 6140

Telephone 04 499 9144
Fax 04 499 9145
Email qualifications@infrastructureito.org.nz
Website <http://www.infrastructureito.org.nz/>

Planned Review

Any person or organisation may contribute to the review of this qualification by sending feedback to the standard setting body at the above address.

| | |
|-------------|------|
| Next Review | 2016 |
|-------------|------|

Other standard setting bodies whose standards are included in the qualification

Agriculture Industry Training Organisation
Building and Construction Industry Training Organisation
Forest Industries Training and Education Council (FITEC)
New Zealand Industry Training Organisation
NZ Extractive Industries Training Organisation
NZQA
Tranzqual ITO

Certification

This certificate will display the logos of NZQA, InfraTrain New Zealand and the organisation that has been granted consent to assess against standards that meet the requirements of the qualification (accredited).

Classification

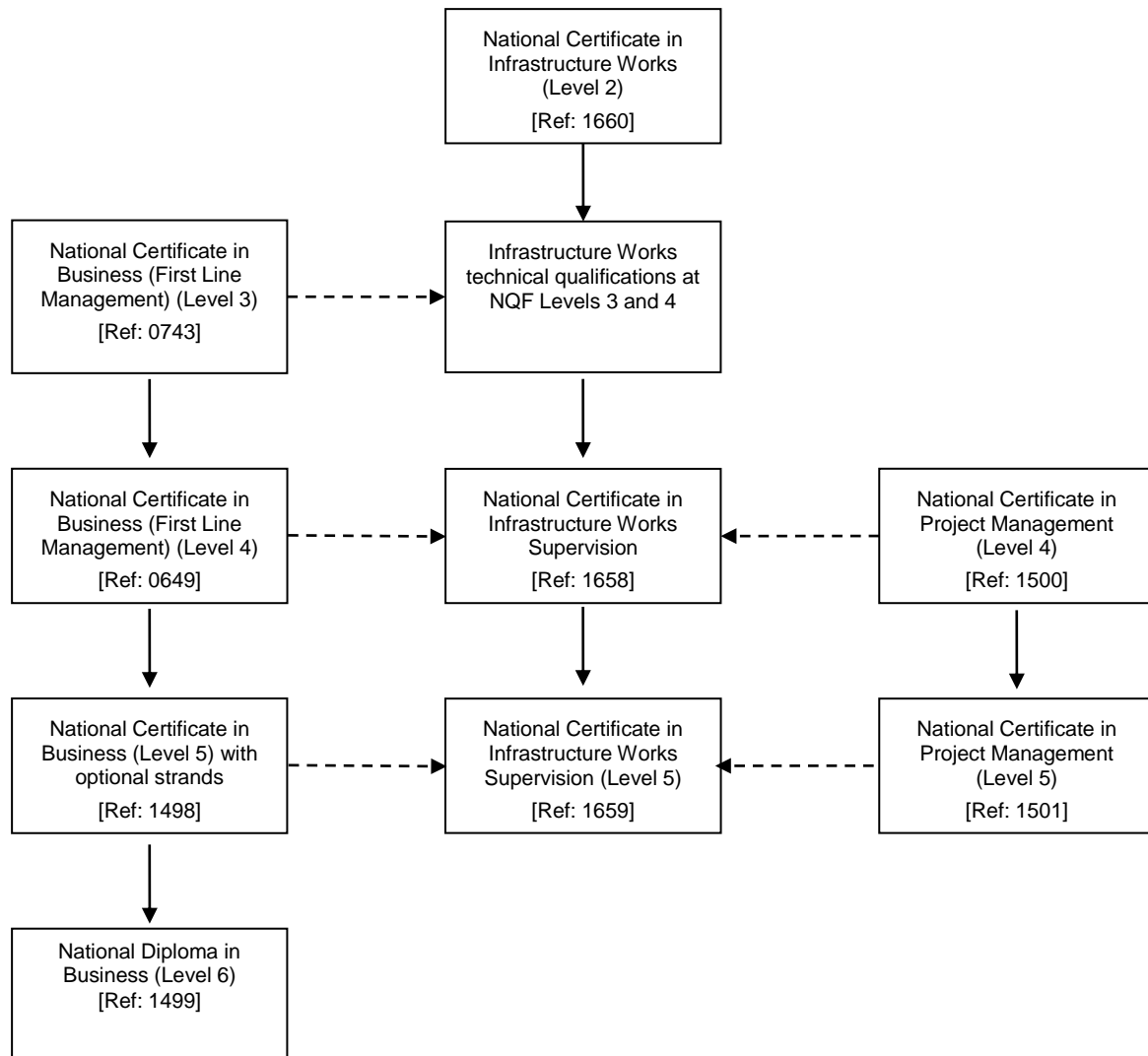
This qualification is classified according to the classification system listed on the Directory of Assessment Standards (DAS) and the New Zealand Standard Classification of Education (NZSCED) system as specified below.

| DAS Classification | | NZSCED | |
|--------------------|---|--------|--|
| Code | Description | Code | Description |
| 452 | Engineering and Technology > Infrastructure Works | 0309 | Engineering and Related Technologies > Civil Engineering |

Quality Management Systems

Providers and Industry Training Organisations must be granted consent to assess by a recognised Quality Assurance Body before they can register credits from assessment against standards. Organisation with consent to assess and Industry Training Organisations assessing against standards must engage with the moderation system that applies to those standards. Consent to assess requirements and the moderation system are outlined in the associated Consent and Moderation Requirements (CMR) for each standard.

Pathway Diagram



Key

- > Recommended pathway
 - - - - -> Complementary qualification